

W7-1041

7" Touch Panel Product mode:W7-1041 (With gateway function)

Functional description: 7" WEB configuration touch panel is a new product research and development independently from Shanghai Sunfull, can monitor real-time data and directly into the configuration pages. Touch panel has characteristic of conventional general configuration and is easy to operate, and it can run on an embedded system features Compared with other configuration software, the biggest bright spot is based entirely on WEB development, the configurations of the user to create projects, can be downloaded to touch panel, phone、 iPad and PC can access via browser, and open data interface by a third party system integration.

Application fields : W7-1041 Support conversion to standard BACnet protocol, standard Modbus protocol, or WeChat alarm, SMS alarm, upload cloud by MQTT. It is applied to BA system, or in the industrial field, to connect some uncommon control devices, such as PLC ,air conditioner, elevator, fire control, lighting control system, smart ammeter,water meter, etc. So users can monitor to the field device through the WEB configuration touch panel, or by mobile phone、 iPad and PC.

Runtime environment:

OS: Win 7/Win8/Win10/Win Server 2003/Win Server2008 etc.

Browser: IE9 (and above) 、 Safari、 Google Chrome、 firefox、 Opera etc.

Register Type&Num

Number of Registers is dynamic, each register can be builded up to 2048 points.

Supported BACnet type and number are shown below.

Supported Modbus type and number are shown below.

BACnet Register-type	BACnet Register-number	Modbus Register-type	Modbus Register-number
AI (Read only)	2048 (0~2047)	0X(Coil Status) (Read and Write)	2048 (1~2048)
AO (Read and Write)	2048 (0~2047)	1X(Input Status) (Read Only)	2048 (1~2048)
AV (Read and Write)	2048 (0~2047)	4X(Holding Register) (Read and Write)	2048 (1~4096)
BI (Read only)	2048 (0~2047)	3X(Input Register) (Read only)	2048 (1~4096)
BO (Read and Write)	2048 (0~2047)		
BV (Read and Write)	2048 (0~2047)		
MI (Read only)	2048 (0~2047)		
MO (Read and Write)	2048 (0~2047)		
MV (Read and Write)	2048 (0~2047)		

Notes:

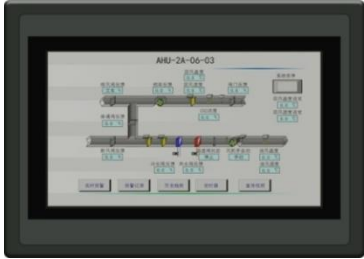
1. 4X and 3X register address = translocation register address *2+1

0X and 1X register address = translocation register address +1

2. The data type of 4X and 3X can only be Float

W7-1041

7" Touch Panel Product mode :W7-1041 (With gateway function)



Software Features:

-Green and free installation, support both Chinese and English;

-Support close to 200 protocols to convert into BACnet server Modbus server ,upload to cloud by MQTT

-Support SMS、 E-mail 、 WeChat and other communication methods to send alarm information;

-Support JS script to implement logical control;

-Support user group management, configuration screen monitoring can set permissions;

-Supporting historical storage;

-Support multiple forms of timing, event triggering, and custom function functions to facilitate the extension of applications;

-Support LAN, easy realization of remote viewing and control of touch screen via phone、 iPad、 PC;

-Add new private protocol support, within 2 weeks;

Hardware Parameter:

Screen resolution: 1024*600

Displayer: 7" TFT

Memory: DDR3 1G

Touch type: resistance-type

System: LINUX

Weight: 600g

Power dissipation: ≤8W

Material: Plastic Enclosure

CPU: 4 core 1.4GHZ

Power Supply: AC/DC 12V-24V

Flash: 8GB

Hole size: 210.5 * 146.50 mm

Port: 1x Ethernet, 4x RS485 serial ports
1x RS232 serial port, 1x debug serial port

Temperature: -20 ~ 70°C(working)
-40 ~ 85°C(storage and transportation)

Network:
1x High performance 100M/10M adaptive industrial network card, support AUTO MDI/MDIX

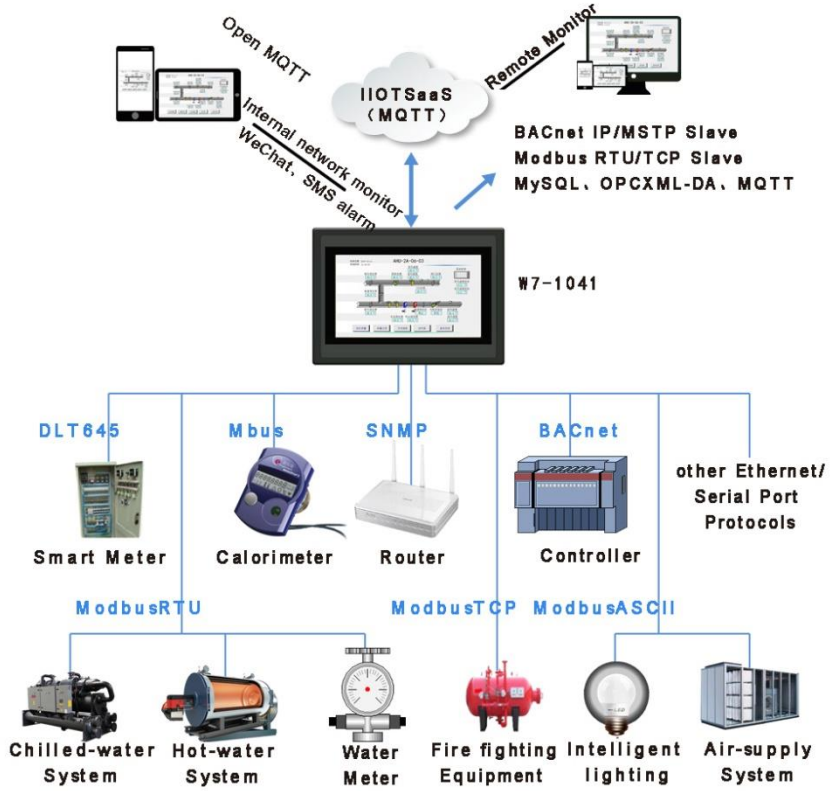
Humidity:
20% ~ 90%no condensation (work),
15% ~ 95%no condensation (storage and transportation)

W7-1041

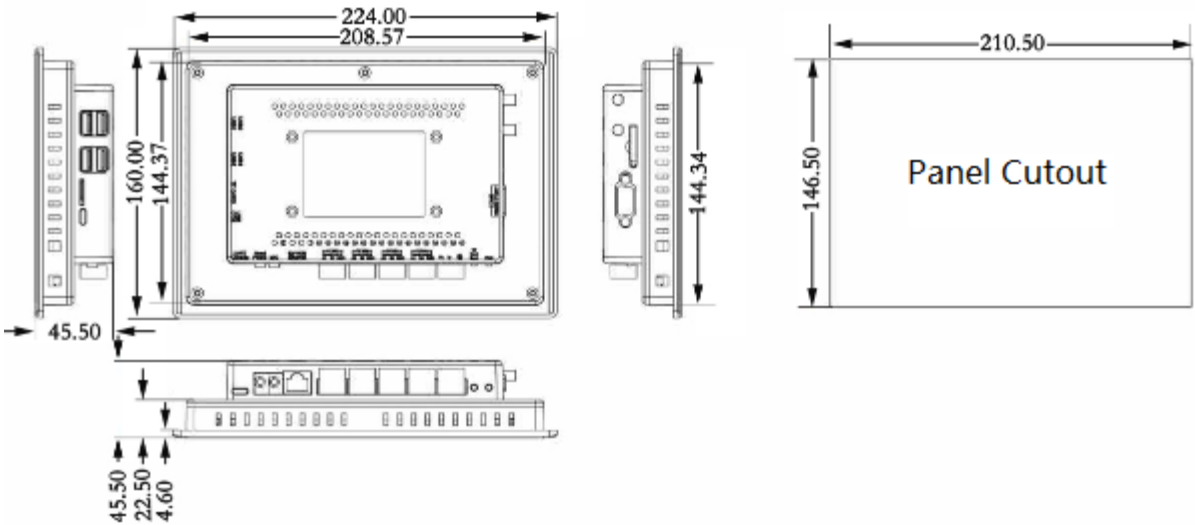
W10-1041

W15-1041

Application Principle Diagram



Product Size



W7-1041
W10-1041
W15-1041