

INTELLIGENT LOCK&ELECTRIC RIM LOCK SERIES

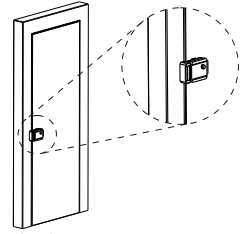


ABK-702A-R

Electric Rim Lock Right-open

Lock Size: 126L x 102W x 34.5D(mm)
 Open the door: right door special
 Fail Safe: Locked when energized
 Power supply: DC 12V ± 10% Current: 1.5 - 3A
 Unlock time: 1S
 Lock tongue length: 13mm
 Passed durability test: 300,000 cycles
 Material: iron, surface drawing
 Scope of application: applicable to residential buildings, offices, schools, factories, warehouses, etc., and can be used with electronic controlled anti-theft security door

Weightl: 1.45kg

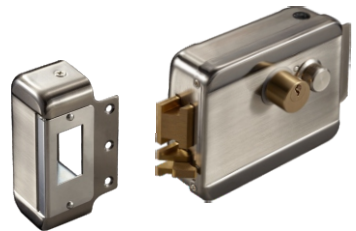
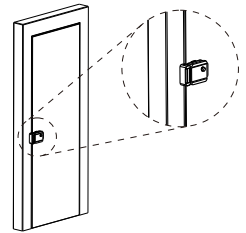


ABK-702A-L

Electric Rim Lock Left-open

Lock Size: 126L x 102W x 34.5D(mm)
 Open the door: right door special
 Fail Safe: Locked when energized
 Power supply: DC 12V ± 10% Current: 1.5 - 3A
 Unlock time: 1S
 Lock tongue length: 13mm
 Passed durability test: 300,000 cycles
 Material: iron, surface drawing
 Scope of application: applicable to residential buildings, offices, schools, factories, warehouses, etc., and can be used with electronic controlled anti-theft security door

Weightl: 1.45kg

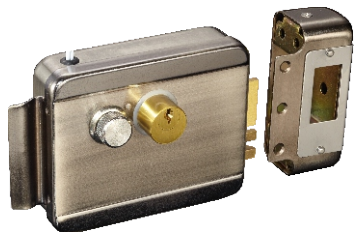
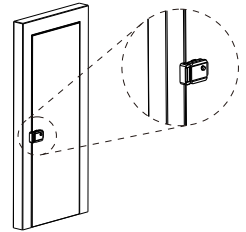


ABK-702B-R

Electric Rim Lock Right-open

Lock Size: 126L x 102W x 34.5D(mm)
 Open the door: right door special
 Fail Safe: Locked when energized
 Power supply: DC 12V ± 10% Current: 1.5 - 3A
 Unlock time: 1S
 Lock tongue length: 13mm
 Passed durability test: 300,000 cycles
 Material: iron, surface drawing
 Scope of application: applicable to residential buildings, offices, schools, factories, warehouses, etc., and can be used with electronic controlled anti-theft security door

Weightl: 1.45kg

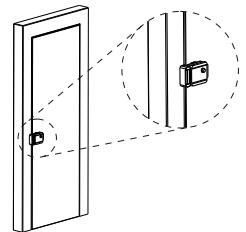


ABK-702B-L

Electric Rim Lock Left-open

Lock Size: 126L x 102W x 34.5D(mm)
 Open the door: right door special
 Fail Safe: Locked when energized
 Power supply: DC 12V ± 10% Current: 1.5 - 3A
 Unlock time: 1S
 Lock tongue length: 13mm
 Passed durability test: 300,000 cycles
 Material: iron, surface drawing
 Scope of application: applicable to residential buildings, offices, schools, factories, warehouses, etc., and can be used with electronic controlled anti-theft security door

Weightl: 1.45kg

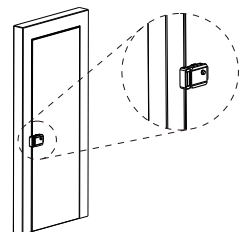


**ABK-703A
ABK-703A-S**

Intelligent electric lock

Lock Size: 130L x 100W x 61.25D(mm)
 Fail Safe: Locked when energized
 Power supply: DC 12V ± 10%
 Starting current: 350mA Working current: 25mA
 Lock tongue length: 20mm
 Material: stainless steel, surface drawing
 Scope of application: widely used in intelligent community, factory, warehouse, base station, and building intercom, intelligent access control system supporting the use of

Weightl: 1.45kg



**ABK-703B
ABK-703B-S**

Intelligent electric lock

Lock Size: 130L x 100W x 61.25D(mm)
 Fail Safe: Locked when energized
 Power supply: DC 12V ± 10%
 Starting current: 350mA Working current: 25mA
 Lock tongue length: 20mm
 Material: stainless steel, surface drawing
 Scope of application: widely used in intelligent community, factory, warehouse, base station, and building intercom, intelligent access control system supporting the use of

Weightl: 1.45kg

