

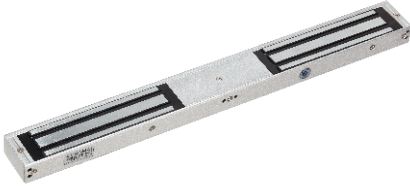
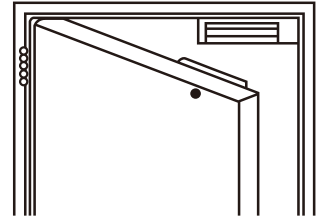
ELECTROMAGNETIC LOCK SERIES



YM-350N

Single Door Magnetic Lock (800Lbs)

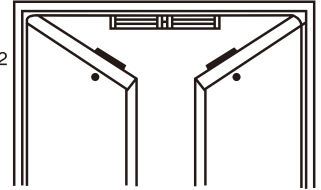
Size: 260Lx54.7Wx29.6H(mm)
 Holding force: 350kg(800Lbs)
 Voltage: DC12V or DC24V
 Current: 12V/ 500mA ± 10% ; 24V/ 250mA ± 10%
 Suitable for: Wooden door
 Glass door
 Metal door
 Fireproof door
 Feature: Fail safe
 Weight: 2.7kg



YM-350ND

Double Door Magnetic Lock (800Lbsx2)

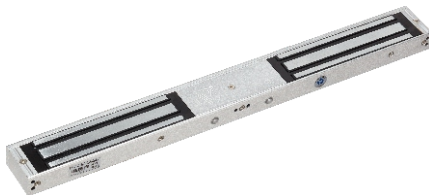
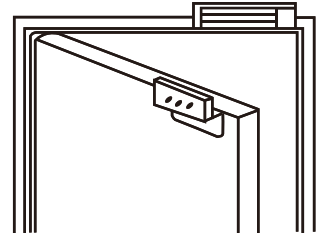
Size: 520Lx54.7Wx29.6H(mm)
 Holding force: 350kgx2(800Lbsx2)
 Voltage: DC12V or DC24V
 Current: 12V/500mA ± 10% x2 ; 24V/250mA ± 10% x2
 Suitable for: Wooden door
 Glass door
 Metal door
 Fireproof door
 Feature: Fail safe
 Weight: 5.4kg



YM-350N(LED)

Single Door Magnetic Lock with LED & Signal(800Lbs)

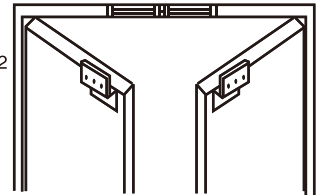
Size: 260Lx54.7Wx29.6H(mm)
 Holding force: 350kg(800Lbs)
 Voltage: DC12V or DC24V
 Current: 12V/500mA ± 10% ; 24V/250mA ± 10%
 Signal Output: Lock signal(NO/NC/COM)
 LED: Red shows locked; Green shows unlocked
 Suitable for: Wooden door/Glass door
 Metal door/Fireproof door
 Feature: Fail safe
 Weight: 2.7kg



YM-350ND(LED)

Double Door Magnetic Lock with LED & Signal(800Lbsx2)

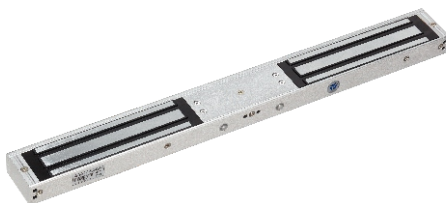
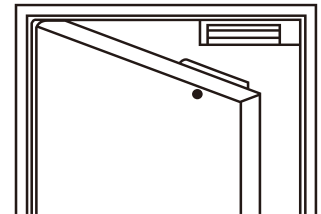
Size: 520Lx54.7Wx29.6H(mm)
 Holding force: 350kgx2(800Lbsx2)
 Voltage: DC12V or DC24V
 Current: 12V/500mA ± 10% x2 ; 24V/250mA ± 10% x2
 Signal Output: Lock signal(NO/NC/COM)
 LED: Red shows locked; Green shows unlocked
 Suitable for: Wooden door/Glass door
 Metal door/Fireproof door
 Feature: Fail safe
 Weight: 5.4kg



YM-350N(LED)-DS

Single Door Magnetic Lock with LED & Bond Sensor(800Lbs)

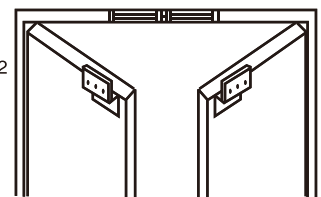
Size: 260Lx54.7Wx29.6H(mm)
 Holding force: 350kg(800Lbs)
 Voltage: DC12V or DC24V
 Current: 12V/500mA ± 10% ; 24V/250mA ± 10%
 Suitable for: Wooden door/Glass door
 Metal door/Fireproof door
 Signal: Lock signal & door signal
 LED: Red shows locked; Green shows unlocked
 Signal Output: Door/Lock signal(NO/NC/COM)
 Feature: Fail safe
 Weight: 2.7kg



YM-350ND(LED)-DS

Double Door Magnetic Lock with LED & Bond Sensor(800Lbsx2)

Size: 520Lx54.7Wx29.6H(mm)
 Holding force: 350kgx2(800Lbsx2)
 Voltage: DC12V or DC24V
 Current: 12V/500mA ± 10% x2 ; 24V/250mA ± 10% x2
 Suitable for: Wooden door/Glass door
 Metal door/Fireproof door
 Signal: Lock signal & door signal
 LED: Red shows locked; Green shows unlocked
 Signal Output: Door/Lock signal(NO/NC/COM)
 Feature: Fail safe
 Weight: 5.4kg



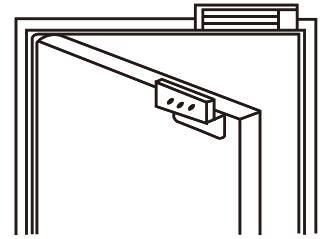
ELECTROMAGNETIC LOCK SERIES



YM-350NT(LED)

Single Door Magnetic Lock with LED, Signal & Time Delay (800Lbs)

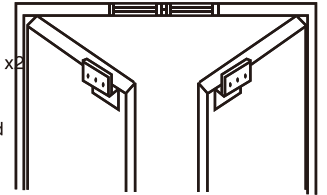
Size: 260Lx54.7Wx29.6H(mm)
 Holding force: 350kg(800Lbs)
 Voltage: DC12V or DC24V
 Current: 12V/500mA ± 10% ; 24V/250mA ± 10%
 Suitable for: Wooden door/Glass door
 Metal door/Fireproof door
 LED: Red shows locked; Green shows unlocked
 Signal Output: Lock signal(NO/NC/COM)
 Feature: Fail safe
 Time delay: 0,3,6,9sec
 Weight: 2.7kg



YM-350NTD(LED)

Double Door Magnetic Lock with LED, Signal & Time Delay (800Lbsx2)

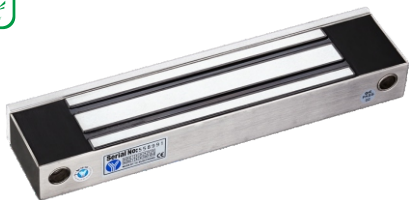
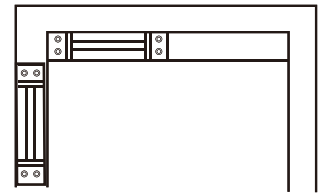
Size: 520Lx54.7Wx29.6H(mm)
 Holding force: 350kgx2(800Lbsx2)
 Voltage: DC12V or DC24V
 Current: 12V/500mA ± 10% x2 ; 24V/250mA ± 10% x2
 Suitable for: Wooden door/Glass door
 Metal door/Fireproof door
 LED: Red shows locked; Green shows unlocked
 Signal Output: Lock signal(NO/NC/COM)
 Feature: Fail safe
 Time delay: 0,3,6,9sec
 Weight: 5.4kg



**YM-350M(SS304)
 YM-350M(SS304)-S**

Single Door Magnetic Lock with Mortise Mount & Waterproof (800Lbs)

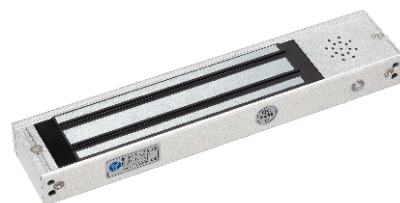
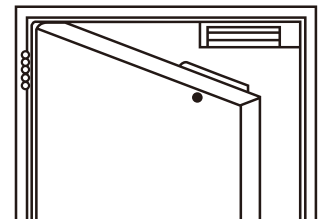
Size: 250Lx47Wx27H(mm)
 Holding force: 350kg(800Lbs)
 Voltage: DC12V or DC24V
 Current: 12V/500mA ± 10% ; 24V/250mA ± 10%
 Signal output: Lock signal(NO/COM) **YM-350M(SS304)-S**
 Material: 304 stainless steel
 Suitable for: Wooden door Roller shutter door
 Metal door Fireproof door
 Feature: Fail safe
 Weight: 2.7kg



YM-350W/YM-350W-S

Single Door Magnetic Lock with Waterproof (800Lbs)

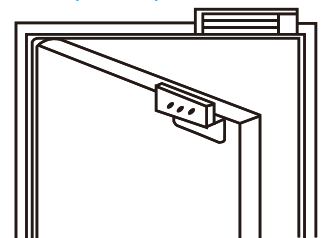
Size: 227.6Lx52.6Wx28.3H(mm)
 Holding force: 350kg(800Lbs)
 Voltage: DC12V or DC24V
 Current: 12V/480mA ± 10% ; 24V/240mA ± 10%
 Signal output: **YM-350W-S**
 Suitable for: Wooden door Metal door
 Fireproof door Glass door
 Waterproof level: IP-68
 Feature: Fail safe
 Weight: 2.7kg



YM-350BZ

Single Door Magnetic Lock with LED, Signal & Buzzer(800Lbs)

Size: 285Lx55Wx27.5H(mm)
 Holding force: 350kg(800Lbs)
 Voltage: DC12V or DC24V
 Current: 12V/500mA ± 10% ; 24V/250mA ± 10%
 Signal Output: Lock signal(NO/NC/COM)
 LED: Red shows locked; Green shows unlocked
 Suitable for: Wooden door Glass door
 Metal door Fireproof door
 Feature: Fail safe
 Buzzer time: 5,10,20,30sec
 Weight: 2.7kg



YM-350DBZ

Double Door Magnetic Lock with LED, Signal & Buzzer (800Lbsx2)

Size: 570Lx55Wx27.5H(mm)
 Holding force: 350kgx2(800Lbsx2)
 Voltage: DC12V or DC24V
 Current: 12V/500mA ± 10% ; 24V/250mA ± 10%
 Signal Output: Lock signal(NO/NC/COM)
 LED: Red shows locked; Green shows unlocked
 Suitable for: Wooden door Glass door
 Metal door Fireproof door
 Feature: Fail safe
 Buzzer time: 5,10,20,30sec
 Weight: 5.4kg

