

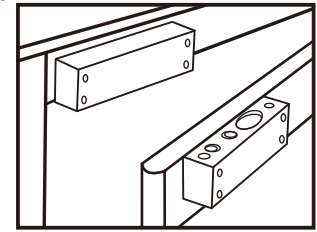
# BRACKET&INSTALLATION OF ELECTRIC BOLT



**BBK-500**

## Aluminium Bracket for Narrow Frame Door

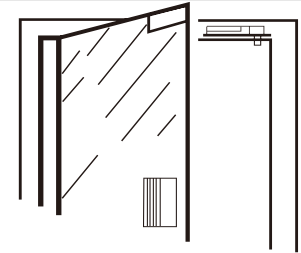
Use with: YB-100/100+/100+LED/100S/300  
(YB-200/700 need order)  
Suitable for: Inswing door  
Opening mode: 90 or 180 degree door  
Finishing: Anodized aluminum  
Weight: 0.6kg



**BBK-600**

## Stainless Steel Bracket for Frameless Glass Door

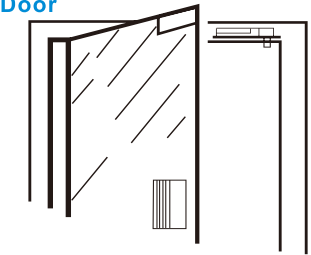
Used with: YB-100/100+/100+LED  
YB-100S/ YB-200/300  
Glass thickness: 10-15mm  
Suitable for: Glass door  
Opening mode: 180 degree swing door  
Weight: 0.3kg



**BBK-601**

## Bracket Specially for Frameless Glass Door (aluminium)

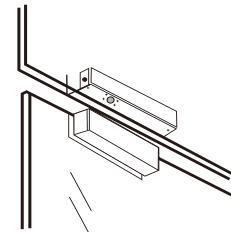
Used with: YB-100/100+/100+LED/100S/  
YB-200/300  
Glass thickness: 10-12mm  
Suitable for: Glass door  
Opening mode: 180 degree swing door  
Weight: 0.15kg



**BBK-700**

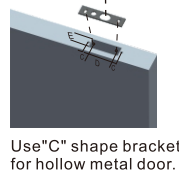
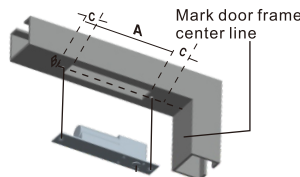
## Stainless Steel Bracket for Fully Frameless Glass Door

Size: 205Lx58Wx46H(mm)  
Glass thickness: 10-15mm  
Suitable for: Glass door  
Opening mode: 180 degree swing door  
Used with: YB-100/100+/100+LED/100S  
YB-300(YB-200/700 need order)  
Weight: 1.6kg

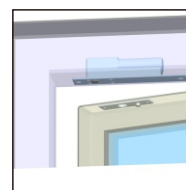


## Installation of electric drop bolt

	A	B	C	D	E
YB-100/YB-100+	206	36	12	91	26
YB-100S	206	36	12	91	26
YB-100+LED	206	36	12	91	26
YB-200	206	36	12	91	26
YB-300	206	36	12	91	26
YB-500A/B	193	26	12	91	26
YB-700A/B	226	36	12	101	26

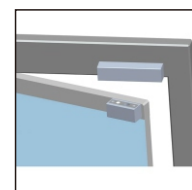


Use "C" shape bracket for hollow metal door.



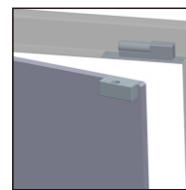
Standard Installation

B1



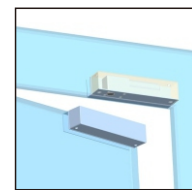
BBK-500

B2



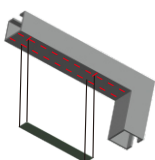
BBK-600/601/602

B3



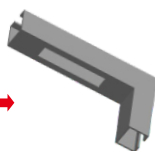
BBK-700

B4



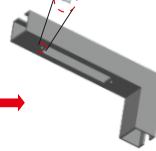
A1

Place lock body template to match with door frame center line



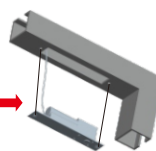
A2

Cut hole



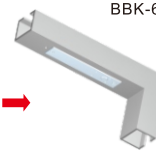
A3

Fix mounting plate (For hollow metal frame)



A4

Connect wires



A5

Mount lock body on the door frame and test